



details

general

nationality: [norwegian](#)
 purpose: [transport](#)
 type: [tanker](#)
 subtype/class: [WWI Z-class standard tanker \(br.\)](#)
 WWI Z-class standard tanker [Inverarder SS \[+1942\]](#)
 (br.) ref.:
 propulsion: [steam](#)
 date built: [1918](#)
 status: [live](#)

details

weight (tons): 5563 grt
 dimensions : 121,9 x 15,9 x 9,4 m
 material: [steel](#)
 engine: [triple expansion](#) engine, single shaft, 1 screw
 power: 517 n.h.p. [*]
 speed: 11 knots
 yard no.: 903

about the loss

cause lost: [torpedo](#)
 date lost: [04/10/1943](#) [dd/mm/yyyy]
 casualties:

about people

builder: [Gray William & Co., Ltd., West Hartlepool \(Sunderland\)](#)

last owner: [1] [Jensen J. P.](#)
[SS Marit](#)
 period 1930 ~ 1943

prev. owners: [2] [Anglo-Saxon Petroleum Co. Ltd., London](#)
[SS Crenatula](#)
 period 1920 ~ 1927

[3] [TSC - The Shipping Controller \(WWI\), London](#)
[SS War Subadar](#)
 period 1918 ~ 1920

captain:
 complement: 8 [*]

about the wreck

depth (m.): 850 max. / -- min. (m)
 orientation:
 protected:
 war grave:

updates

entered by: [Vleggeert Nico](#)
 entered: 09/05/2008
 last update: [Allen Tony](#)
 last update: 16/08/2011

[*] means that the value was inherited from Inverarder SS [+1942], the reference for WWI Z-class standard tanker (br.).

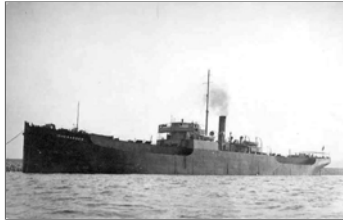
Position

[Letpens Jan](#) 04/10/2009
 latitude: [hydro member](#)
 longitude: [hydro member](#)
 AIS: [check AIS](#)
 mark: [add position to my marks \(+/- 5miles\)](#)
 dist. homepage: [dist. homepage](#)

show neighbour. wrecks: [members only](#).

[insert new position](#)

Pictures



[Letpens Jan](#) 15/08/2011
[WWI Z-class standard tanker](#)
 (br.) ref.: [Inverarder SS \[+1942\]](#)
 SS Inverarder, a WWI Z-type standard tanker (5.800 grt., 412 x 52 ft, single screw, 11 knots)
 copyrights [Unknown - onbekend - inconnu](#)



[insert new picture](#)

History

[Letpens Jan](#) 15/08/2011
 The Nowegian steamer tanker [MARIT](#), owned by J. P.Jensen, Arendel was torpedoed and sunk on October 4th, 1943 by the German submarine [U-596](#), while serving as an Admiralty Auxiliary fleet tanker.

[insert new history](#)

Documents

[insert new document](#)

About Owners

[TSC - The Shipping Controller \(WWI\), London](#)

The position of Controller-General of Merchant Shipbuilding was created for Lord Pirrie at a time when merchant shipbuilding in the United Kingdom was in a very nsatisfactory state and a stimulus to increased production was urgently needed.

He went to the Admiralty without any staff, and, as a war measure, a large number of standard carg...

[read more](#)

About Builders

[Gray William & Co., Ltd., West Hartlepool \(Sunderland\)](#)

William Gray and Company of Central Marine Engineering Works, West Hartlepool, was a shipbuilding firm from 1874-1963. They were the largest firm of shipbuilders in the Hartlepoons and also lasted longer than any other local shipbuilding firm. For a hundred years the company ensured the towns' prosperity by giving jobs to thousands of local peop...

[read more](#)

Advertisement

advertise

search

You may consider access to

- [Netherlands Hydrographic Service](#)
 + 60 maritime charts and wrecks shown on charts
 + 86.850 wreck positions worldwide
- [British Isles Hydrographic Service](#)
 + 443 maritime charts and wrecks shown on charts
 + 113.630 wreck positions worldwide
- [All Hydrographic Services](#)

search wreck:

show prev. names

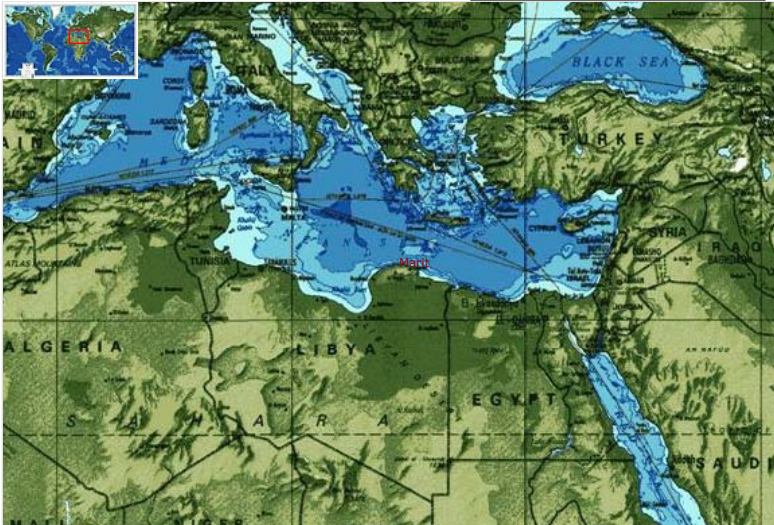
[search advan. A-Z](#)

search chart:

name no.

[chart catalogue](#)

search owner/builder:



Marit